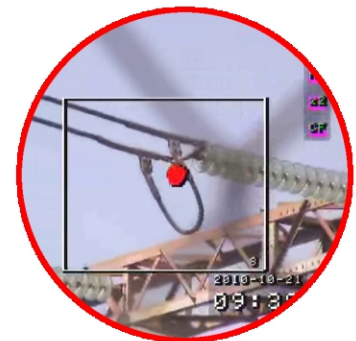


CoroCAM 6D

Daylight UVc & Visible Channel Camera
Onboard Still Imaging and Video Recording
UV Photon Counting
Lightweight & Robust Design
Easy Operation & Data Download
Bright Colour VGA LCD Display
Low Noise Highly Sensitive Detector
Wide Field Of View with 10x Optical Zoom



- The CoroCAM 6D is a re-development of the CoroCAM Solar Blind UVc Imaging System with an emphasis on cost reduction through innovative design.
- Sensitivity and optical performance was retained by using the same optical and sensor components as the successful CoroCAM 504, modernised electronics was added to reduce weight and size.
- The flip-up Colour LCD Display (640x480 pixel) is optimized for use in daylight and has a wide viewing angle.
- A keypad with large buttons for easy operation (even with gloved hands) is positioned on the upper surface.
- Image, Video and Audio recordings can be saved onboard on a SD Card & download via USB. High quality video can be streamed to an external recorder via composite output.
- The standard onboard batteries can easily be exchanged.
- All these features have been integrated into a lightweight, robust system for visualizing UVc discharges from Corona, Arcing and Sparking.



Applications:

- | | |
|---|---|
| • Transmission Line Inspection | • Distribution Line Inspection |
| • Substation Inspection | • HV Electrical Component Inspection by OEM Manufacturers |
| • Handheld Airborne Inspection | • High Voltage Panel Inspection |
| • Generator and Motor Winding Inspections | |

SYSTEM SPECIFICATIONS

Specifications subject to change without notice.

Combined Output

Optical System	Video Output	Composite
Format		PAL/NTSC Available
Optical Channels		Visible and Ultra Violet channels
		Separate or overlaid
Focus Type		Automatic , manual override
Focus Range		2m to Infinity
Window aperture		Ø= 62 mm

Ultraviolet Channel

Image type	Monochrome video
Sensitivity	3x10 ⁻¹⁸ Watt/cm ² Typical
Spectrum	UV 240 – 280 nm
Field of View	8° Horizontal x 6° Vertical
Zoom Factor	1x
Update Rate	50 Hz max
Focus type	Auto slaved to visible, manual

Visible Channel

Type	Colour Video, full function
Sensitivity @ Full frame rate	0.25 Lux min
Field of View	Default synchronised with UV channel
Zoom Factor	10 x optical

Operator Interfaces

Application	Handheld or remote controlled
Display	5.7" VGA LCD with LED backlighting
	Update Rate: 25/30 fps
Status Indicator	LED's
Alarms	Audio, LED & Aux contacts
Control Inputs	Onboard multi pushbutton
	Remote control unit
	PC software controlled - option
Audio	Onboard microphone & speaker
	Headphone output
	Microphone input

Power System

Power Consumption	9 watt:
Battery Type	Rechargeable Li-Ion
	Sony Type L compatible
Battery Run Time	Typical 2 hrs min operation
Battery Location	Onboard, quickly replaceable
Charging	On camera / optional charger
External Supply	9-16V 12VA - Car or mains adapter
Mains Adaptor	110-240VAC 50-60 Hz / 12VDC 3A
Power Modes	Operate, power save, charge
Protection	Reverse polarity, over current, Under voltage

Data Storage

Storage Media	Removable SD Card
Image Format	JPEG compressed still image
Video Storage	MPEG compressed video
Audio	Audio label, wave file
Storage Capacity	1000+ images or >2 hr video per GB
	Via USB
File download	External via card reader

Communication

Interfaces	
USB	Image download from SD Card
RS485	Camera control via PC
Auxiliary	Remote control interface
	RS232 general port
	1 Alarm output - option
	1 Trigger input - option

Processing

Image Processing	Powerful onboard digital signal Processor for:
	Visible / UV image & data overlaying
	UV image enhancements
	UV image integration
	Image compression and storage
Date/Time	Real-time clock with battery backup
Temperature	Internal camera temperature
Location	GPS (Optional)
Audio Modes	Microphone input for audio notes
Power Saving	Real-time, integrate, standby, off
User Settings / Configuration	User Configurable auto standby/off
	Customised operating modes and control functions
	User definable titles, notes and file names for storage
	User configured alarm output - option
Software Upgrading	Via SD Card

Mechanical

Weight	1.7 kg including battery
Size	220mm L x 160mm W x 80mm H
Mounting Points	¼" Thread tripod mount

Environmental

Operating Temp	-15°C to 55°C
Storage Temp	-25°C to 60°C
Humidity	Up to 90%, non condensating
IP rating	IP 54
Physical Protection	Impact absorbing covers
	Shock protection 25G
	Vibration 2,5G
	Protective carry bag
Safety standard	CE,IEC1010-1

Standard System

- CoroCAM 6D DAYLIGHT UV IMAGER
- OPERATING MANUAL
- AC MAINS ADAPTOR
- CABLE SET (VIDEO & POWER)
- 1 x Li-ION BATTERY
- REPORTING SOFTWARE
- PROTECTIVE CARRY CASE

Optional Accessories

- REMOTE CONTROL SOFTWARE
- TWIN BATTERY CHARGER
- SD STORAGE CARD